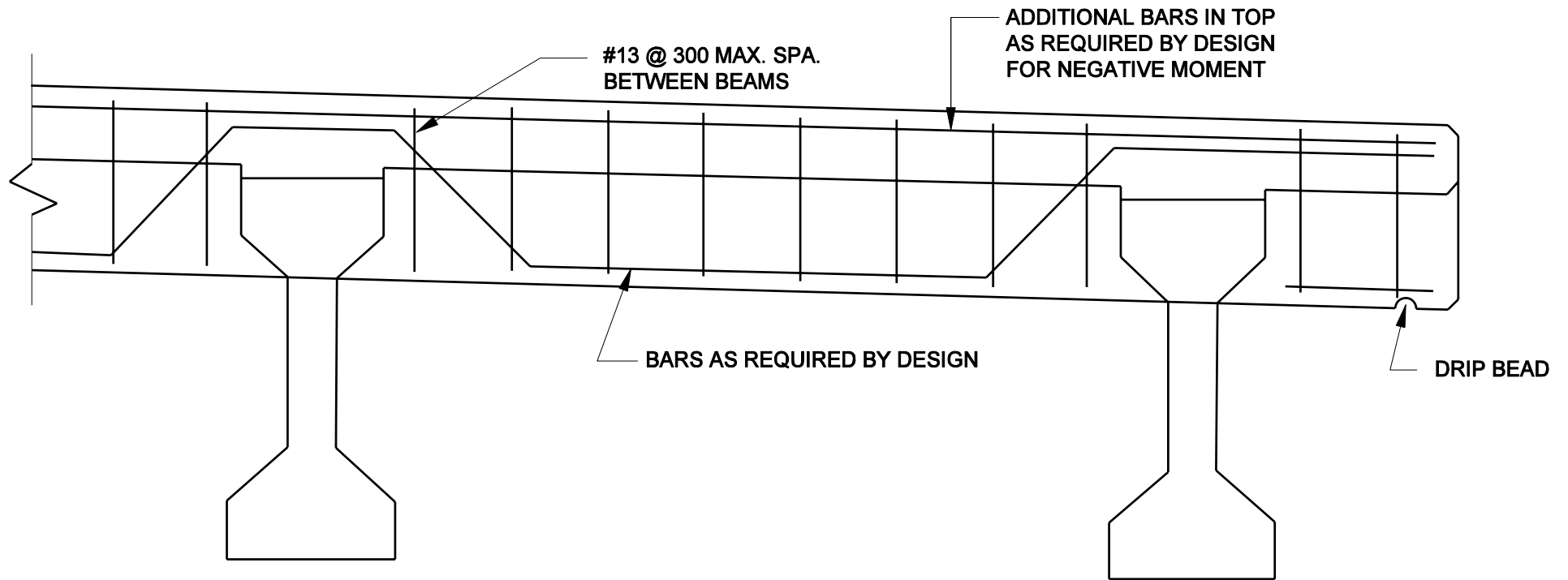


SUGGESTED ALTERNATE TRANSVERSE EDGE BEAM DETAILS
 (For Bulb-Tee Beams, AASHTO I-Beam or Steel Plate Girders)

Figure 61-5L

NOTE: ALL REINFORCING STEEL
SHALL BE EPOXY COATED.

NOTE: THE EDGE BEAM SHALL EXTEND
FROM COPING TO COPING.



SUGGESTED ALTERNATE TRANSVERSE EDGE BEAM DETAILS
(For Bulb-Tee Beams, AASHTO I-Beams, or Steel Plate Girders)

Figure 61-5L
(Continued)